



A Solid Foundation

Bona Adhesives

Bona[®]

It all comes down to a solid foundation.

Telling a good floor from a bad one is easy. In our experience, it all comes down to a solid foundation. Because it's what you put under the floor that determines how that floor will perform.

Lifetime performance

Bona Silane Adhesives work with a wide variety of subfloor materials. They don't require sealers or primers, so you can work fast. They achieve fast initial green-grab strength, providing a tenacious bond that ensures a secure installation of the floor. They deliver the optimal balance of strength and elasticity needed for the wide range of environments a wood floor may experience during its life cycle.

Quality you can count on

By using premium raw materials and making our own formulations, Bona can guarantee the highest level of quality.

Sustainability since the 1970s

Sustainability has been in the Bona DNA since the mid 70s, when we introduced waterborne wood floor finishes as a revolution in the industry. Bona Silane Adhesives are no exception. They are solvent and VOC free and GREENGUARD approved for indoor use which means safe indoor air quality for both wood flooring professionals and floor owners.



It's as simple as that.

Bona Silane Adhesives are part of The Bona System®. An elite family of professional products that are made to work perfectly together. We make our own formulations, so our products are one of a kind.

Bona Silane Adhesives

- ✓ Easy to apply with no arm fatigue
- ✓ Easy to clean and won't harm finish
- ✓ Excellent 'green-grab' keeps flooring in place
- ✓ 'Memory free' prevents drift between board seams
- ✓ Rapid shear strength allows foot traffic in one day
- ✓ Exceptional ridge stability for maximum adhesion
- ✓ Compatible with radiant heat systems
- ✓ GREENGUARD Certified
- ✓ Water and solvent free
- ✓ Prop 65 Compliant
- ✓ Zero VOCs



Your guide to choosing the right adhesive.

PRODUCT

Bona R851 Adhesive



FLOOR TYPE

Solid or Engineered Prefinished or Unfinished Flooring

- ✓ Up to 16" in width (9" for solid)
- ✓ Up to 3/4" thick

When used with "MBP" Clip-On trowel

Bona R859 Adhesive



Solid or Engineered Prefinished or Unfinished Flooring

- ✓ Up to 16" in width (9" for solid)
- ✓ Up to 3/4" thick

When used with "MBP" Clip-On trowel

Bona R880 Adhesive



Great for Trim, Starter Rows, Treads, Risers, Vertical Applications including wall treatments

Bona R850T Adhesive Sausage



Solid or Engineered Prefinished or Unfinished Flooring

- ✓ Replaces top nailing on close-out rows and board replacements
- ✓ Supplemental fastening on wide plank boards, stairs, treads and risers

MAXIMUM SHEAR/ ELONGATION	MOISTURE	COVERAGE	SOUND REDUCTION RATING	PACKAGING
335 psi/250%	Up to 15 lbs or 85% RH, 4% Tramex or 2.5% CM	50-85 sq ft/gallon depending on trowel notch requirements	IIC 71 dB STC 65 dB	3 gallon container
	Up to 18 lbs or 95% RH 6% Tramex or 5% CM	30-35 sq ft/gallon		
335 psi/250%	Up to 15 lbs or 85% RH, 4% Tramex or 2.5% CM	50-85 sq ft/gallon depending on trowel notch requirements	IIC 70 dB STC 65 dB	4 gallon container
	Up to 18 lbs or 95% RH 6% Tramex or 5% CM	30-35 sq ft/gallon		
–	–	30 linear ft/tube with a 1/4" bead	–	10.4 ounce tube
335 psi/250%	For use with glue-assist	60 linear feet per tube with a 1/4" bead	–	20 oz. foil tube

Understanding sound absorption.



High heels, scampering dogs, dropped objects. Sound is transmitted when hard objects interact with hardwood floors. Without anything to absorb it, sound waves can permeate the building envelope. Suppressing that sound is incredibly important in custom residential homes, office buildings and multi-family condominiums.

Resistance to noise transmission

Bona Adhesives are tested in accordance with the IIC (Impact Insulation Class) standard using the measurement procedure ASTM E492-09. This standard measures the floors resistance to the transmission of impact noise, such as those mentioned above. The higher the rating the better the sound absorption. The Uniform Building Code (UBC) requires a rating of 50.

Sound Reduction Rating:

R851 - 71 dB (6" concrete slab w/ceiling)

R859 - 70 dB (6" concrete slab w/ceiling)



Optimized Layer for Moisture Protection



New! Bona R540 Moisture Barrier/Primer

- ✓ Mitigates potential moisture issues, like cupping, in new and existing construction
- ✓ Substitute for felt paper installed over plywood subfloors*
- ✓ Increases adhesion over sealed plywood subfloors
- ✓ Can be used as a sealer for plywood subfloors up to 20% MC
- ✓ Can be used for damp proofing concrete subfloors up to 95% RH & 18lbs**
- ✓ Dries fast, allowing nail-down installation immediately
- ✓ No more tears in paper or seams to be concerned with – continuous film offers more uniform coverage and moisture protection

Bona R540 is a one-component roll-on moisture membrane specially designed to mitigate vapor transmission on absorbent and non-absorbent subfloors. The polyurethane reactive primer is compatible with the entire Bona Adhesive System.

* moisture readings up to 20%

** when applied as a two-coat system

Strength for the Life of the Floor



Bona R581 Adhesive

- ✓ Easy to apply - no arm fatigue
- ✓ Excellent “green grab” means the flooring stays in place
- ✓ Unsurpassed ridge stability provides maximum adhesive transfer
- ✓ Easy to clean - will not harm the finish on pre-finished floors; will not stain hands
- ✓ GREENGUARD certified for indoor air quality
- ✓ Zero VOCs



New generation, one component, silane-based wood flooring adhesive that provides exceptional green grab strength. Its elastomeric characteristics allow the adhesive to move with the wood as it expands and contracts over the life of the floor.

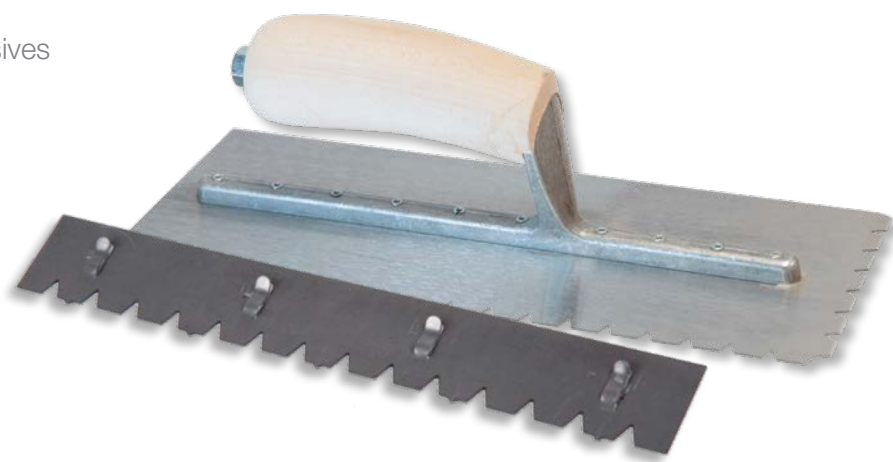
Get the most out
of Bona adhesives








The value of the Bona adhesive is in using the correct Bona trowel for the job. A tough & durable family of trowels, they are specifically designed to work with Bona adhesives — optimizing the installation. Get the right coverage for yourself & the job by choosing a Bona trowel.

Bona Trowels

- ✓ Specifically designed for Bona adhesives
- ✓ Made in the USA
- ✓ High quality steel
- ✓ Optimum installation
- ✓ Unique shape
- ✓ Right coverage
- ✓ Right performance
- ✓ Peace of mind



	DESCRIPTION	USE	SIZE	COVERAGE RATE
	Bona 1000F Trowel	Parquet (12" x 12") Underlayment Pad	5/32" x 5/32" x 5/32" V-notch	80-85 sq. ft./gallon
	Bona 1250G Trowel	Engineered flooring up to 8" width or solid plank 3/4" thick and 5" width	1/4" x 1/4" x 7/16" V-notch	55-60sq. ft./gallon
	Bona 1500G Trowel	Engineered flooring up to 16" width or solid plank 3/4" thick and 9" width	5/16" x 5/16" x 7/16" V-notch	50-55 sq. ft./gallon
	Engineered Flooring Trowel	Engineered flooring, maximum 3/4" thick and 7" width	7/32" x 13/64" x 25/64" V-notch	70-75 sq. ft./gallon
	MBP Clip On Trowel	Engineered flooring up to 16" width or solid plank 3/4" thick and 9" width	7/16" V-notch with MBP spacer	30-35 sq. ft./gallon

**Not Actual Size*

**Suggested notched trowel for maximum coverage of adhesive.
For optimum spread rate hold at a 90 degree angle.**

It all comes down to a solid foundation.

Bona Silane Adhesives

- ✓ Easy to apply with no arm fatigue
- ✓ Easy to clean and won't harm finish
- ✓ Excellent 'green-grab' keeps flooring in place
- ✓ 'Memory free' prevents drift between board seams
- ✓ Rapid shear strength allows foot traffic in one day
- ✓ Exceptional ridge stability for maximum adhesion
- ✓ Compatible with radiant heat systems
- ✓ GREENGUARD Certified
- ✓ Water and solvent free
- ✓ Prop 65 Compliant
- ✓ Zero VOCs



Bringing out the best in hardwood floors.

At Bona US, we are committed to the lifetime of hardwood floors. We are devoted to providing solutions that keep a floor perfect during its entire life. Through our long commitment and constant search for innovation we offer lasting, sustainable results for professionals and floor owners.

Bona is a family-owned company founded in 1919. With its headquarters in Sweden, Bona is now present in more than 90 countries all over the world through subsidiaries and distributors. We provide products for the installation, maintenance and renovation of hardwood floors throughout their lifetime. Today we have solutions for professionals, homeowners and prefinished manufacturers.